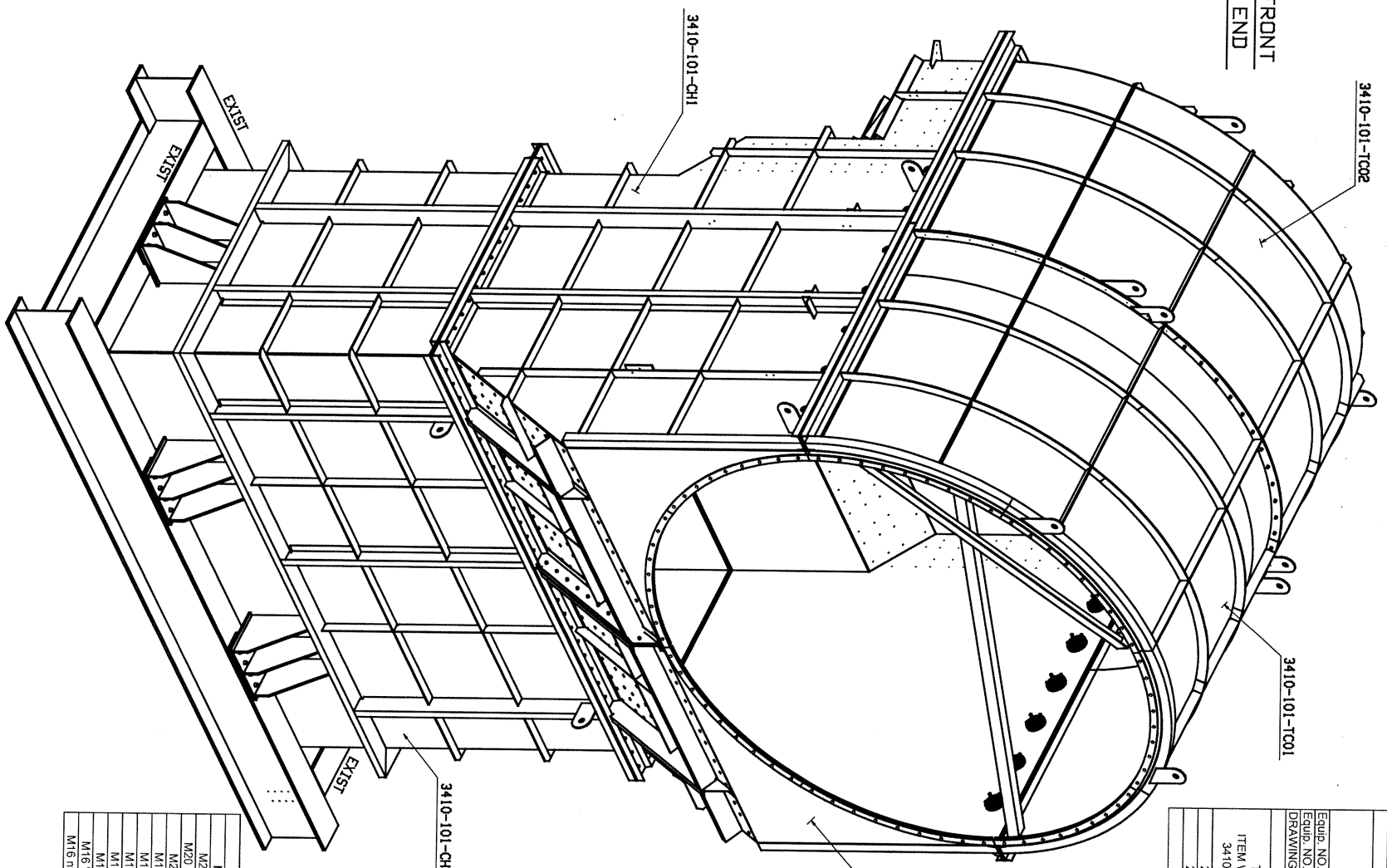


FRONT
END



REAR
END

BILL OF MATERIAL					
Equip. NO.	ITEM WEIGHT Kg	ITEM WEIGHT Kg	ITEM WEIGHT Kg	ITEM WEIGHT Kg	ITEM WEIGHT Kg
3410-101-CH1	4843.1	4843.3	8964.5	18.4	164.85
3410-101-CH2	4843.1	4843.3	8964.5	18.4	164.85
3410-101-TC01	4843.1	4843.3	8964.5	18.4	164.85
3410-101-TC02	4843.1	4843.3	8964.5	18.4	164.85
TOTAL		19372.0	19372.0	75.6	659.95
TOTAL		19372.0	19372.0	75.6	659.95

FLUOR CANADA LTD.
 REVIEWED FOR GENERAL DIMENSIONS ONLY. THIS REVIEW DOES NOT RELIEVE THE VENDOR OF FULL RESPONSIBILITY FOR THE ADEQUACY, CORRECTNESS AND ACCURACY OF CALCULATIONS, DESIGN, DETAILS AND DIMENSIONS.
 A-PROCEED
 B-PROCEED, RESUBMIT AS CERTIFIED
 C-DO NOT PROCEED, CHANGE AS NOTED & RESUBMIT
 I.O.-INFORMATION ONLY
 BY: *Allyson* DATE: *2/20/11*

Mark	Qty	Description	Length	Quality	Unit weight	Total Weight
M20 Bolts	28		50	ISO 8.8	0.3	7.8
M20 Bolts	4		55	ISO 8.8	0.3	1.2
M20 Bolts	60		45	ISO 8.8	0.3	1.6
M20 Bolts	40		35	ISO 8.8	0.2	1.2
M20 Nuts	130				0.075	9.8
M20 Washers	130				0.02	2.6
M16 Bolts	64		50	ISO 8.8	0.2	12.8
M16 Bolts	2		45	ISO 8.8	0.2	0.4
M16 Bolts	28		28	ISO 8.8	0.05	6.3
M16 Nuts	128				0.012	1.512
M16 Washers	128				0.054	6.912
M12 Nuts	112			ISO 8.8	0.023	2.576
M12 Washers	112				0.006	0.672
					Bolts weight	93.658

Mark	Qty	Description	Length	Quality	Unit weight	Total Weight
M20 Bolts	24		50	ISO 8.8	0.3	7.2
M20 Washers	24		55	ISO 8.8	0.2	4.8
M16 Bolts	4		50	ISO 8.8	0.075	0.3
M16 Bolts	144		70	ISO 8.8	0.2	28.8
M16 Bolts	384		60	ISO 8.8	0.2	76.8
M16 Nuts	608				0.05	30
M16 Washers	608				0.012	7.296
M16 Dry-Lock Nuts	4				0.2	0.8
					Bolts weight	167.776

ISOMETRIC

ERECTION NOTES
 GENERAL NOTES ON SHEET:
 ELEVATIONS: IN METERS (U.N.O.)
 DIMENSIONS: IN MILLIMETERS
 MATERIAL: ASTM A56 (U.N.O.)
 WELDING: MIN. WELD SIZE: 6 mm (U.N.O.)
 ELECTRODE: E70XX according to AWS.
 PENETRATION: SEE SPECIAL NOTES
 MAIN CONNECTIONS: ASTM A325N TC (U.N.O.)
 SECOND CONNECTIONS: ASTM A307 (U.N.O.)
 INDICATES BEARING BAR DIRECTION:
 CHECKED SIDE:

CONFIGURACION DE COLORES: RED = 0.5 ; YELLOW = 0.4 ; GREEN = 0.35 ; CYAN = 0.8
 BLUE = 1.0 ; MAGENTA = 1.2 ; WHITE = 0.16

REV.	DESCRIPTION	DATE	BY	APP
0	ISSUED FOR CONSTRUCTION	07-14-11		
B	FOR APPROVAL	05-11-11		
A	FOR APPROVAL	03-24-11		

DT 2011-004

QuintDetailers
 PAKA SOCO METAL

FLUOR
 TORONTO
VULCOR

PROJECT: DYU TOLGOI
 TITLE OR DESCRIPTION: CONCENTRATOR BUILDING SAG MILL DISCHARGE CHUTE
 FLUOR REF. DRAWING N°: A2MW-3400-55N-101
 DATE: 03-24-2011
 DETAILER: QUINTDETAILERS LTDA.
 WEIR-3400-55N-101
 SCALE: N/S
 SHEET 1 OF 369